



# PARTS LIST

## CHAIN SAW

### G2500 G2500-OPS

**NOTE :**

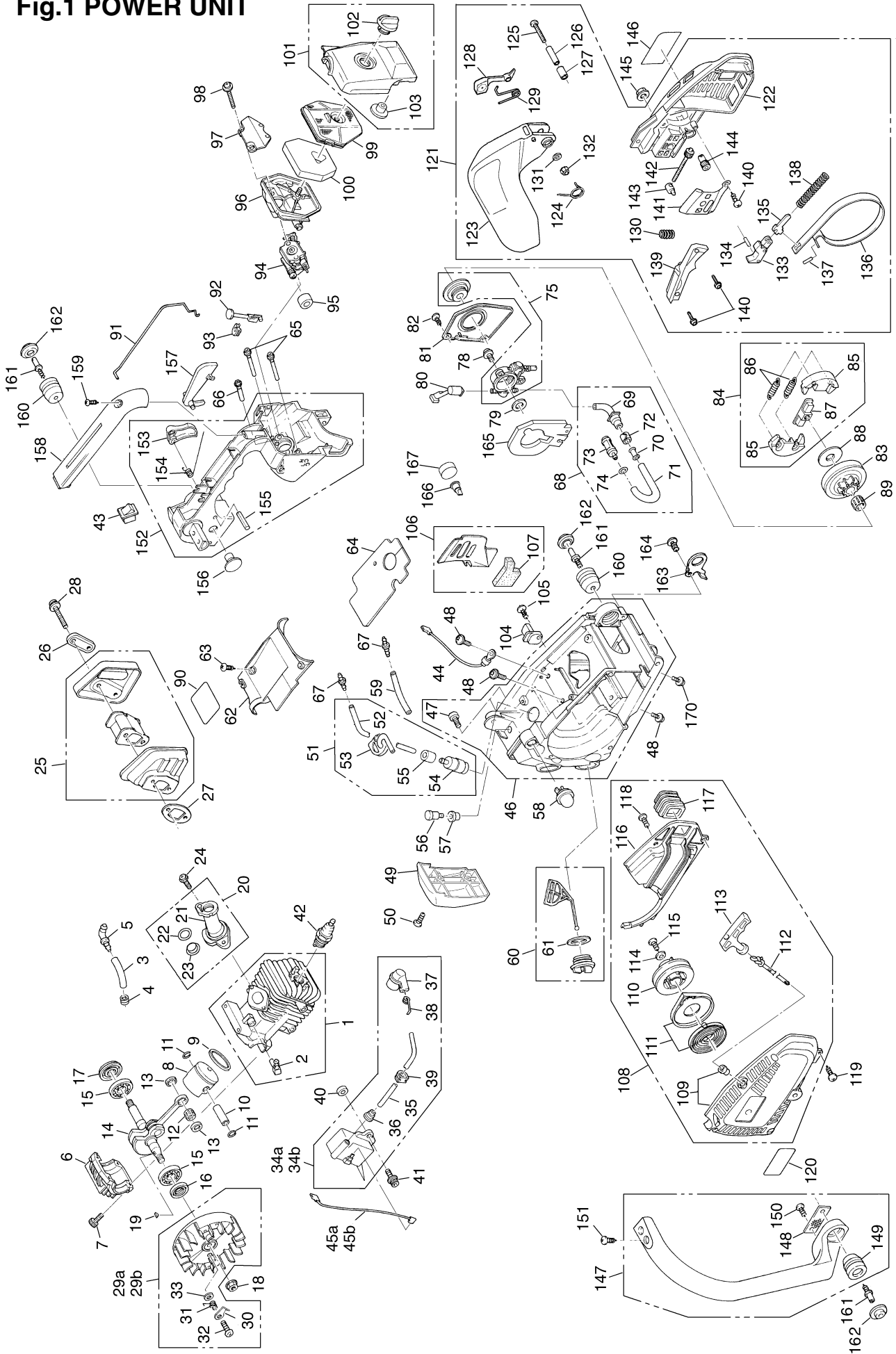
1. Use ZENOAH genuine parts specified in the parts list for repair and/or replacement.
2. ZENOAH does not warrant the machines, those which have been damaged by the use of any parts other than those specified by the company.
3. When placing orders of parts for repair and/or replacement, check if the model name and the serial number are suitable to those specified in the parts list, then use parts number described in the parts list.
4. The contents described in the parts list may change due to improvement.
5. The parts for the machine shall be supplied within ten (10) years after the machine is discontinued. [It is possible that some specific parts may be subject to change of their delivery term and list price within the limit of ten (10) years after the machine is discontinued. And it is also possible that some parts may be available even after the limit of ten (10) years.]

APPLICABLE SERIAL NUMBERS :

3/8 pitch 771139 and up  
1/4 pitch 771239 and up

February 2008

Fig.1 POWER UNIT



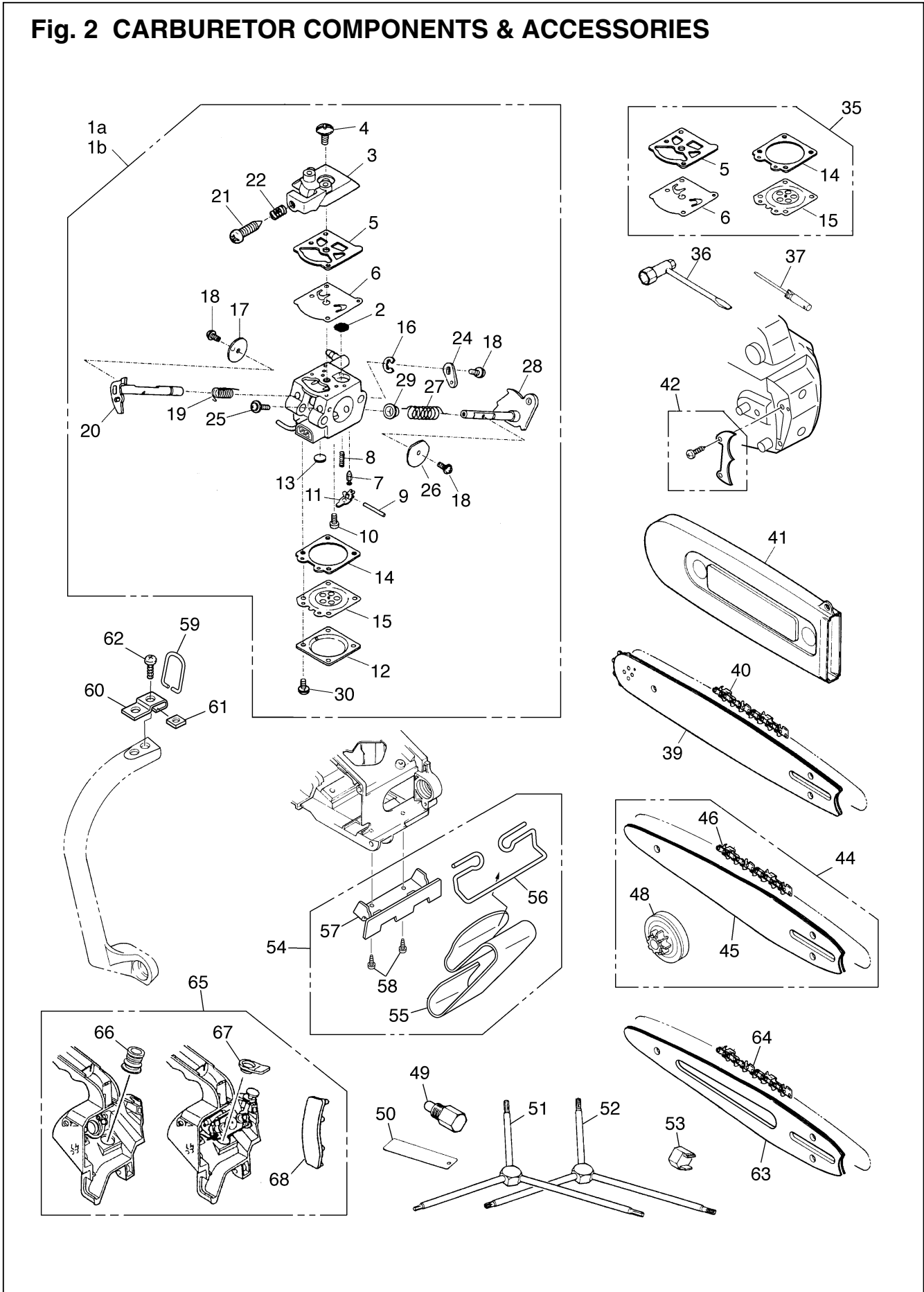
# Fig.1 POWER UNIT

G2500

Key#	PART NUMBER	DESCRIPTION	Q'TY /UNIT	NOTE	Key#	PART NUMBER	DESCRIPTION	Q'TY /UNIT	NOTE
1	848C151211	CYLINDER COMP.	1		88	2841-51210	PLATE	1	
2	2841-12120	• ELBOW	1		89	3310-51310	BEARING	1	
3	8488G30550	PIPE	1		90	848C1290F2	LABEL	1	
4	3310-82230	CLIP	1		91	2841-82510	ROD	1	
5	3350-34320	ELBOW	1		92	2841-82411	ROD	1	
6	2841-21110	CRANKCASE	1		93	2841-82421	GROMMET	1	
7	T4950-52021	BOLT	4		94a	848C1B8101	CARBRETOR ASSY	1	WT-747
8	2841-41112	PISTON	1		94b	848C128100	CARBRETOR ASSY	1	
9	2841-41210	RING, piston	1		95	2841-82210	SEAL	1	
10	1600-41310	PIN	1		96	848C1083A3	PLATE	1	
11	1260-41320	RING, snap	2		97	2841-82120	PLATE	1	
12	5500-41410	BEARING	1		98	0263-30545	SCREW	2	
13	1101-41340	WASHER	2		99	2841-83111	CLEANER	1	
14	2841-42001	SHAFT COMP.	1		100	2841-83120	ELEMENT	1	
15	1155-21240	BEARING	2		101	2841-83303	COVER COMP.	1	
16	T2041-21210	OIL SEAL	1		102	2841-83320	• KNOB	1	
17	T2041-21220	OIL SEAL	1		103	2841-83330	• GROMMET	1	
18	1650-43230	NUT	1		104	2630-53412	CATCHER	1	
19	1000-43240	KEY	1		105	2630-32170	SCREW	1	
20	2841-06011	PIPE SET	1		106	848C106610	PLATE	1	
21	2841-14112	• PIPE, inlet	1		107	848C1067D0	• SEAL	1	
22	2841-14140	• RING, felt	1		108	2841-75001	STARTER ASSY	1	
23	2841-14130	• GUIDE	1		109	2841-75101	• CASE COMP.	1	
24	0263-30414	SCREW	2		110	2841-75210	• REEL	1	
25	T2041-15100	MUFFLER ASSY	1		111	2841-75300	• SPRING COMP.	1	
26	T2046-15140	PLATE	1		112	1850-75160	• ROPE	1	
27	2841-15210	GASKET	1		113	3330-75421	• KNOB	1	
28	2670-82210	SCREW	2		114	1140-51230	• WASHER	1	
29a	848C147120	ROTOR ASSY	1	DIGITAL	115	2630-75510	• SCREW	1	
29b	2841-71102	ROTOR ASSY	1		116	2841-75611	• COVER	1	
30	848C1471R1	• PAWL	2		117	2841-75710	• PIPE	1	
31	848C1471S0	• SPRING	2		118	2630-31950	• SCREW	1	
32	8488151200	• SCREW	2		119	2630-31950	SCREW	4	
33	2850-71151	• WASHER	2		120	2475-75131	LABEL	1	
34a	848C147120	COIL ASSY	1	DIGITAL	121	2475-54000	BRAKE ASSY	1	
34b	2841-71200	COIL ASSY	1		122	2475-54110	• COVER	1	
35	2841-71220	• CORD	1		123	2841-54121	• GUARD	1	
36	2616-71320	• CAP	1		124	2872-54120	• SPRING	1	
37	2850-72110	• CAP	1		125	0263-80530	• SCREW	1	
38	1400-72121	• SPRING	1		126	2872-54140	• SPACER	1	
39	1140-72110	• GROMMET	1		127	2850-54211	• SPACER	1	
40	5500-72150	SPACER	2		128	848C605423	• WEIGHT	1	
41	3350-14150	BOLT	2		129	2841-54230	• SPRING	1	
42	3699-90032-10	SPARK PLUG	1	RCJ7Y	130	2851-54270	• SPRING	1	
43	2850-74102	SWITCH ASSY	1		131	01641-20508	• WASHER	1	
44	2850-74213	CORD	1		132	3310-53331	• NUT	1	
45a	8488M10120	CORD	1		133	2851-54301	• LEVER COMP.	1	
45b	2841-74220	CORD	1		134	2851-54350	• ROLLER	1	
46	848C103111	CASE COMP.	1		135	2670-54411	• ARM	1	
47	2841-31141	• SCREW	2		136	2841-54510	• BAND	1	
48	2870-31750	SCREW	4		137	3356-24140	• ROLLER	1	
49	2475-31130	COVER	1		138	2670-54610	• SPRING	1	
50	2630-31950	SCREW	2		139	2841-54620	• COVER	1	
51	2841-31202	PIPE ASSY	1		140	2630-33610	• SCREW	4	
52	2841-31210	• PIPE	1		141	2841-53211	• PLATE	1	
53	2841-31252	• GROMMET	1		142	2841-53240	• SCREW	1	
54	1850-85300	• FILTER	1		143	2810-53221	• NUT	1	
55	2841-31280	• COLLAR	1		144	2671-53230	• GEAR	1	
56	2850-34501	BREATHER ASSY	1		145	3350-53410	NUT	1	
57	3317-85120	GROMMET	1		146	2475-53121	LABEL	1	
58	2850-81900	PUMP	1		147	2841-32101	HANDLE ASSY	1	
59	2841-31260	PIPE	1		148	2841-32150	• STOPPER	1	
60	2841-31801	CAP ASSY	2		149	2841-35110	• DAMPER	1	
61	2841-31820	• GASKET	2		150	2630-75510	• SCREW	1	
62	T2041-31910	COVER	1		151	2630-75510	SCREW	2	
63	2630-31950	SCREW	2		152	848C103311	HANDLE COMP.	1	
64	2841-31921	MAT	1		153	848C1033C3	• LEVER THROTTLE	1	
65	2841-37111	PIPE	2		154	3356-33321	• SPRING	1	
66	2841-37121	PIPE	1		155	04025-00524	• SPRING PIN	1	
67	2841-37150	JOINT	2		156	2841-35180	STOPPER	1	
68	2841-31300	PIPE COMP.	1		157	848C3033E3	ARM	1	
69	2841-31311	• PIPE	1		158	2841-34110	COVER	1	
70	3310-57320	• JOINT	1		159	2630-31950	SCREW	1	
71	2841-31330	• PIPE	1		160	2841-35110	DAMPER	2	
72	3310-57340	• CLIP	1		161	2841-35120	BOLT	3	
73	2670-23131	• FILTER	1		162	2841-35150	CAP	3	
74	1260-41320	• RING	1		163	2841-98210	HANGER	1	
75	848CA00640	OIL PUMP SET	1	1/4&3/8	164	2630-33610	SCREW	1	
		• OIL PUMP	1		165	2841-55220	SEAL	1	
		• WORM	1		166	2850-21260	VALVE	1	
78	0263-30416	SCREW	2		167	2841-31410	SEAL	1	
79	2850-55211	WASHER	1						
80	2841-55250	PIPE	1		170	2670-14220	SCREW	1	
81	2841-55310	COVER	1						
82	2630-31950	SCREW	2						
83	2475-51110	DRUM	1	3/8-6T					
83	2841-51110	DRUM	1	1/4-8T					
84	2475-51200	CLUTCH ASSY	1						
85	2475-51220	• SHOE	2						
86	2841-51230	• SPRING	2						
87	2475-51240	• BOSS	1						

a: SERIAL NO. 771139 AND UP  
b: SERIAL NO. 771128 AND BELOW

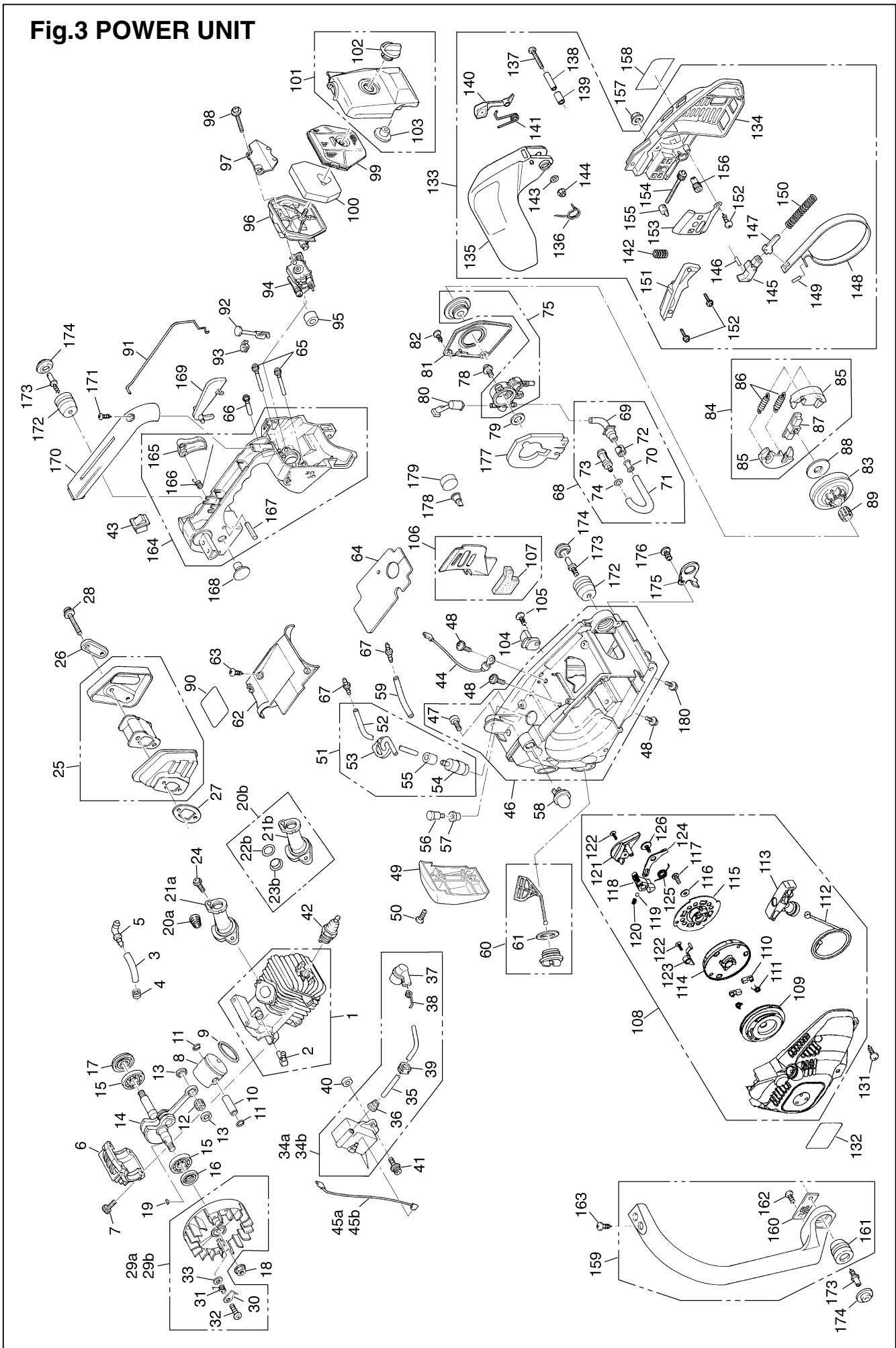
Fig. 2 CARBURETOR COMPONENTS & ACCESSORIES



**Fig. 2 CARBURETOR COMPONENTS & ACCESSORIES**

Key#	PART NUMBER	DESCRIPTION	Q'TY /UNIT	NOTE	Key#	PART NUMBER	DESCRIPTION	Q'TY /UNIT	NOTE	
1a	848C1B8101	CARBRETOR ASSY	1	WT-747	55	T2046-98110	• HOOK	1	OP	
1b	848C128100	CARBRETOR ASSY	1		56	T2046-98120	• HANGER	1	OP	
2	3306-81380	• SCREEN	1		57	T2046-98130	• PLATE	1	OP	
3	2630-81120	• COVER	1		58	2630-33610	• SCREW	2	OP	
4	3310-81130	• SCREW	1		59	T2046-32180	HANGER	1	OP	
5	3304-81140	• GASKET	1		60	T2046-32190	PLATE	1	OP	
6	1172-81150	• DIAPHRAM	1		61	T2046-32170	NUT	1	OP	
7	3356-81310	• VALVE	1		62	2630-32170	SCREW	1	OP	
8	2867-81270	• SPRING	1		63	2980-52111	BAR	1	OP	
9	3310-81250	• PIN	1		64	3622-52210-50	CHAIN, 25AP-60E	1	OP	
10	3310-81240	• SCREW	1		65	2841-98301	ICING KIT	1		
11	3310-81230	• LEVER	1		66	2841-98310	• PIPE	1		
12	3310-81280	• COVER	1		67	2841-98320	• CAP	1		
13	1480-81420	• PLUG	1		68	2841-98330	• PROTECTOR	1		
14	2850-81290	• GASKET	1		<div style="border: 1px solid black; padding: 5px;">                     a: SERIAL NO. 771139 AND UP                      b: SERIAL NO. 771128 AND BELOW                 </div>					
15	3310-81260	• DIAPHRAM	1							
16	1148-81390	• RING	1							
17	3310-81341	• VALVE	1							
18	2880-81470	• SCREW	3							
19	2670-81410	• SPRING	1							
20	T2040-81370	• SHAFT	1							
21	2630-81330	• SCREW	1							
22	3350-81380	• SPRING	1							
24	2841-81440	• LEVER	1							
25	2850-81190	• SCREW	1							
26	2841-81451	• VALVE	1							
27	2850-81350	• SPRING	1							
28	2841-81460	• SHAFT	1							
29	2850-81430	• BUSHING	1							
30	3310-81351	• SCREW	4							
35	T2100-06020	GASKET KIT	1							
36	3320-91140	WRENCH	1							
37	2670-91150	DRIVER	1							
39	2475-52110-50	BAR 10" SP	1							
40	3699-91480	CHAIN 91VG-40E	1							
41	3622-52310	PROTECTOR	1							
42	2475-98100	SPIKE KIT	1	OP						
44	CB10111	BAR KIT	1	OP						
45	2475-52120	• BAR, 10" CV	1							
46	3622-52210-50	• CHAIN, 25AP-60E	1							
48	2841-51110	• DRUM, 1/4-8T	1							
49	3350-96220	STOPPER, PISTON	1	OP						
50	3350-96240	GAUGE, AIR GAP	1	OP						
51	3304-97611	WRENCH, HEXAGON	1	OP						
52	2670-96410	WRENCH, TORX	1	OP						
53	2841-96110	WRENCH, CLUTCH	1	OP						
54	T2046-98100	BELT HANGER KIT	1	OP						

Fig.3 POWER UNIT



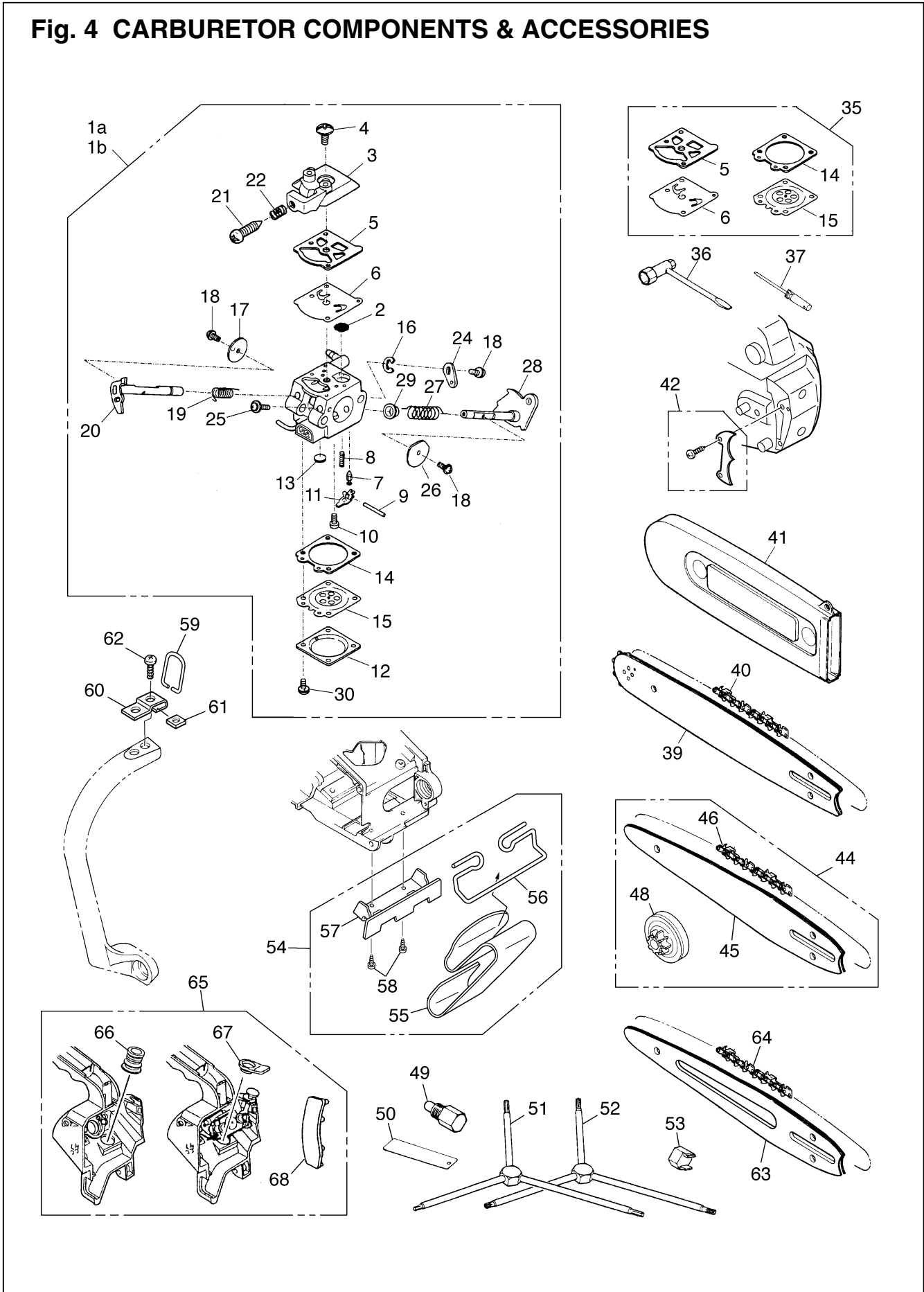
**Fig.3 POWER UNIT**

**G2500-OPS**

Key#	PART NUMBER	DESCRIPTION	Q'TY /UNIT	NOTE	Key#	PART NUMBER	DESCRIPTION	Q'TY /UNIT	NOTE
1	848C151211	CYLINDER COMP.	1		90	848C1290F2	LABEL	1	
2	2841-12120	• ELBOW	1		91	2841-82510	ROD	1	
3	8488G30550	PIPE	1		92	2841-82411	ROD	1	
4	3310-82230	CLIP	1		93	2841-82421	GROMMET	1	
5	3350-34320	ELBOW	1		94a	848C1B8101	CARBRETOR ASSY	1	WT-747
6	2841-21110	CRANKCASE	1		94b	848C128100	CARBRETOR ASSY	1	
7	T4950-52021	BOLT	4		95	2841-82210	SEAL	1	
8	2841-41112	PISTON	1		96	848C1083A3	PLATE	1	
9	2841-41210	RING, piston	1		97	2841-82120	PLATE	1	
10	1600-41310	PIN	1		98	0263-30545	SCREW	2	
11	1260-41320	RING, snap	2		99	2841-83111	CLEANER	1	
12	5500-41410	BEARING	1		100	2841-83120	ELEMENT	1	
13	1101-41340	WASHER	2		101	2841-83303	COVER COMP.	1	
14	2841-42001	SHAFT COMP.	1		102	2841-83320	• KNOB	1	
15	1155-21240	BEARING	2		103	2841-83330	• GROMMET	1	
16	T2041-21210	OIL SEAL	1		104	2630-53412	CATCHER	1	
17	T2041-21220	OIL SEAL	1		105	2630-32170	SCREW	1	
18	1650-43230	NUT	1		106	848C106610	PLATE	1	
19	1000-43240	KEY	1		107	848C1067D0	• SEAL	1	
20a	848C1414D0	PIPE	1		108	848C147591	STARTER ASSY	1	
21a	2841-14112	PIPE INLET	1		109	848C147520	• REEL COMP.	1	
20b	2841-06011	PIPE SET	1		110	848C1475D0	• RATCHET	2	
21b	2841-14112	• PIPE, inlet	1		111	848C1475L0	• SPRING	2	
22b	2841-14140	• RING, felt	1		112	8488S80000	• ROPE	1	
23b	2841-14130	• GUIDE	1		113	3330-75421	• KNOB	1	
24	0263-30414	SCREW	2		114	848C147530	• SPRING COMP.	1	
25	T2041-15100	MUFFLER ASSY	1		115	848C147540	• PULLY COMP.	1	
26	T2046-15140	PLATE	1		116	8488705020	• WASHER	1	
27	2841-15210	GASKET	1		117	8488351200	• SCREW	1	
28	2670-82210	SCREW	2		118	848C1475E1	• SELECT LEVER	1	
29a	848C147120	ROTOR ASSY	1	DIGITAL	119	848C1475H0	• BALL	1	
29b	2841-71102	ROTOR ASSY	1		120	8488D40701	• SPRING	1	
30	848C1471R1	• PAWL	2		121	848C1475B1	• COVER	1	
31	848C1471S0	• SPRING	2		122	8488531000	• SCREW	2	
32	8488151200	• SCREW	2		123	848C1475M0	• RATCHET	1	
33	2850-71151	• WASHER	2		124	848C1475C0	• STOPPER	1	
34a	848C147120	COIL ASSY	1	DIGITAL	125	848C1475S1	• SPRING	1	
34b	2841-71200	COIL ASSY	1		126	1850-75151	• SCREW	1	
35	2841-71220	• CORD	1		131	2630-31950	SCREW	4	
36	2616-71320	• CAP	1		132	2475-75131	LABEL	1	
37	2850-72110	• CAP	1		133	2475-54000	BRAKE ASSY	1	
38	1400-72121	• SPRING	1		134	2475-54110	• COVER	1	
39	1140-72110	• GROMMET	1		135	2841-54121	• GUARD	1	
40	5500-72150	SPACER	2		136	2872-54120	• SPRING	1	
41	3350-14150	BOLT	2		137	0263-80530	• SCREW	1	
42	3699-90032-10	SPARK PLUG	1	RCJ7Y	138	2872-54140	• SPACER	1	
43	2850-74102	SWITCH ASSY	1		139	2850-54211	• SPACER	1	
44	2850-74213	CORD	1		140	848C605423	• WEIGHT	1	
45a	8488M10120	CORD	1		141	2841-54230	• SPRING	1	
45b	2841-74220	CORD	1		142	2851-54270	• SPRING	1	
46	848C103111	CASE COMP.	1		143	01641-20508	• WASHER	1	
47	2841-31141	• SCREW	2		144	3310-53331	• NUT	1	
48	2870-31750	SCREW	4		145	2851-54301	• LEVER COMP.	1	
49	2475-31130	COVER	1		146	2851-54350	• ROLLER	1	
50	2630-31950	SCREW	2		147	2670-54411	• ARM	1	
51	2841-31202	PIPE ASSY	1		148	2841-54510	• BAND	1	
52	2841-31210	• PIPE	1		149	3356-24140	• ROLLER	1	
53	2841-31252	• GROMMET	1		150	2670-54610	• SPRING	1	
54	1850-85300	• FILTER	1		151	2841-54620	• COVER	1	
55	2841-31280	• COLLAR	1		152	2630-33610	• SCREW	4	
56	2850-34501	BREATHER ASSY	1		153	2841-53211	• PLATE	1	
57	3317-85120	GROMMET	1		154	2841-53240	• SCREW	1	
58	2850-81900	PUMP	1		155	2810-53221	• NUT	1	
59	2841-31260	PIPE	1		156	2671-53230	• GEAR	1	
60	848C208511	CAP ASSY	2		157	3350-53410	NUT	1	
61	2841-31820	• GASKET	2		158	2475-53121	LABEL	1	
62	T2041-31910	COVER	1		159	2841-32101	HANDLE ASSY	1	
63	2630-31950	SCREW	2		160	2841-32150	• STOPPER	1	
64	2841-31921	MAT	1		161	2841-35110	• DAMPER	1	
65	2841-37111	PIPE	2		162	2630-75510	• SCREW	1	
66	2841-37121	PIPE	1		163	2630-75510	SCREW	2	
67	2841-37150	JOINT	2		164	848C103311	HANDLE COMP.	1	
68	2841-31300	PIPE COMP.	1		165	848C1033C3	• LEVER THROTTLE	1	
69	2841-31311	• PIPE	1		166	3356-33321	• SPRING	1	
70	3310-57320	• JOINT	1		167	04025-00524	• SPRING PIN	1	
71	2841-31330	• PIPE	1		168	2841-35180	STOPPER	1	
72	3310-57340	• CLIP	1		169	848C3033E3	ARM	1	
73	2670-23131	• FILTER	1		170	2841-34110	COVER	1	
74	1260-41320	• RING	1		171	2630-31950	SCREW	1	
75	848CA00640	OIL PUMP SET	1	1/4&3/8	172	2841-35110	DAMPER	2	
		• OIL PUMP	1		173	2841-35120	BOLT	3	
		• WORM	1		174	2841-35150	CAP	3	
78	0263-30416	SCREW	2		175	2841-98210	HANGER	1	
79	2850-55211	WASHER	1		176	2630-33610	SCREW	1	
80	2841-55250	PIPE	1		177	2841-55220	SEAL	1	
81	2841-55310	COVER	1		178	2850-21260	VALVE	1	
82	2630-31950	SCREW	2		179	2841-31410	SEAL	1	
83	2475-51110	DRUM	1	3/8-6T	180	2670-14220	SCREW	1	
83	2841-51110	DRUM	1	1/4-8T					
84	2475-51200	CLUTCH ASSY	1						
85	2475-51220	• SHOE	2						
86	2841-51230	• SPRING	2						
87	2475-51240	• BOSS	1						
88	2841-51210	PLATE	1						
89	3310-51310	BEARING	1						

a: SERIAL NO. 771139 AND UP  
b: SERIAL NO. 771128 AND BELOW

Fig. 4 CARBURETOR COMPONENTS & ACCESSORIES





**Fig. 4 CARBURETOR COMPONENTS & ACCESSORIES**

Key#	PART NUMBER	DESCRIPTION	Q'TY /UNIT	NOTE	Key#	PART NUMBER	DESCRIPTION	Q'TY /UNIT	NOTE
1a	848C1B8101	CARBRETOR ASSY	1	WT-747	55	T2046-98110	• HOOK	1	OP
1b	848C128100	CARBRETOR ASSY	1		56	T2046-98120	• HANGER	1	OP
2	3306-81380	• SCREEN	1		57	T2046-98130	• PLATE	1	OP
3	2630-81120	• COVER	1		58	2630-33610	• SCREW	2	OP
4	3310-81130	• SCREW	1		59	T2046-32180	HANGER	1	OP
5	3304-81140	• GASKET	1		60	T2046-32190	PLATE	1	OP
6	3304-81150	• DIAPHRAM	1		61	T2046-32170	NUT	1	OP
7	3356-81310	• VALVE	1		62	2630-32170	SCREW	1	OP
8	2867-81270	• SPRING	1		63	2980-52111	BAR	1	OP
9	3310-81250	• PIN	1		64	3622-52210-50	CHAIN, 25AP-60E	1	OP
10	3310-81240	• SCREW	1		65	2841-98301	ICING KIT	1	
11	3310-81230	• LEVER	1		66	2841-98310	• PIPE	1	
12	3310-81280	• COVER	1		67	2841-98320	• CAP	1	
13	1480-81420	• PLUG	1		68	2841-98330	• PROTECTOR	1	
14	2850-81290	• GASKET	1		a: SERIAL NO. 771139 AND UP b: SERIAL NO. 771128 AND BELOW				
15	3310-81260	• DIAPHRAM	1						
16	1148-81390	• RING	1						
17	3310-81341	• VALVE	1						
18	2880-81470	• SCREW	3						
19	2670-81410	• SPRING	1						
20	T2040-81370	• SHAFT	1						
21	2630-81330	• SCREW	1						
22	3350-81380	• SPRING	1						
24	2841-81440	• LEVER	1						
25	2850-81190	• SCREW	1						
26	2841-81451	• VALVE	1						
27	2850-81350	• SPRING	1						
28	2841-81460	• SHAFT	1						
29	2850-81430	• BUSHING	1						
30	3310-81351	• SCREW	4						
35	T2100-06020	GASKET KIT	1						
36	3320-91140	WRENCH	1						
37	2670-91150	DRIVER	1						
39	2475-52110-50	BAR 10" SP	1						
40	3699-91480	CHAIN 91VG-40E	1						
41	3622-52310	PROTECTOR	1						
42	2475-98100	SPIKE KIT	1	OP					
44	CB10111	BAR KIT	1	OP					
45	2475-52120	• BAR, 10" CV	1						
46	3622-52210-50	• CHAIN, 25AP-60E	1						
48	2841-51110	• DRUM, 1/4-8T	1						
49	3350-96220	STOPPER, PISTON	1	OP					
50	3350-96240	GAUGE, AIR GAP	1	OP					
51	3304-97611	WRENCH, HEXAGON	1	OP					
52	2670-96410	WRENCH, TORX	1	OP					
53	2841-96110	WRENCH, CLUTCH	1	OP					
54	T2046-98100	BELT HANGER KIT	1	OP					